

**Deric Wyatt, P.E.**

**District Engineer, District 2**



**Crossett Rotary Club**

**Thursday, May 11, 2017**



# 91<sup>st</sup> General Assembly

## 2017 Legislative Update





## Name Change—AHTD to ARDOT



- **Act 707 – Arkansas Department of Transportation**
- **Effective July 31, 2017**
- **New Logo Revealed at the June 7 Commission Meeting**



- **Act 1097 – Speed Limits**
  - ✓ 75 mph for Controlled Access Facilities
  - ✓ 65 mph for other Highways
- Study to be Conducted
  - ✓ Determine Appropriate Speed Limit Changes





- **Act 1070 – Informational Signs**

- ✓ Construction Projects - \$10 Million plus
- ✓ Start and Estimated Completion Date
- ✓ Job Number
- ✓ Additional Project Information Provided on Website





## **House Bills 1726 and 1727**

Good Roads Foundation

6.5 Percent Sales Tax on Motor Fuels – Wholesale Level

Authorization to Issue Bonds to Voters

Failure at Polls – Tax Not Collected

Defeated in House

Needed 51 Votes

38 for, 35 against, 27 not voting



## **House Bill 2085**

Revenue from Internet Sales Tax

Allocated to Highway Department, Cities and Counties

Passed the House

Died in Senate Revenue and Tax Committee

House Debated and Defeated a Different Internet Sales  
Tax Bill

# State Highway



# Revenue Update





# Act 1 - Arkansas Highway Improvement Plan of 2016

	FY17	FY18	FY19	FY20	FY21
	(x \$1 M)				
<b>2016 Special Session</b>					
Provide Governor's Rainy Day Funds	40.0				

## Potential in Future Years

Allocate 25% of Future Surplus to Highways (Estimate Based on 10 Year Average)		48.0	48.0	48.0	48.0
<b>Totals 2016 Special Session and Potential in Future Years</b>	<b>46.9</b>	<b>76.1</b>	<b>76.1</b>	<b>76.1</b>	<b>76.1</b>

Potential in Future Years					
Allocate 25% of Future Surplus to Highways Based on 10 Year Average	(Estimate	48.0	48.0	48.0	48.0
<b>Totals 2016 Special Session and Potential in Future Years</b>		<b>46.9</b>	<b>76.1</b>	<b>76.1</b>	<b>76.1</b>



# Act 1 - Arkansas Highway Improvement Plan of 2016

## 91st Session Account of the GIF 2017-2019 Biennium

### Estimated Available Funds:

Unobligated Balance from the 90th Session Account	\$14,194,758
FY16 General Revenue Surplus	\$177,413,001
FY17 General Revenue Surplus	\$0
Recouped General Revenue Balances from FY16	\$5,845,301
Recouped General Revenue Balances from FY17 (Estimate)	\$5,000,000
Old Projects Recoupment (Estimate)	\$2,000,000
Outlawed Warrants	\$0
90th Rainy Day Set-Aside Balance (Sec 3 of Act )	\$25,000,000
Carry Forward of 90th Executive General Improvement (Sec 4 of Act)	\$0
<b>Total Estimated Funds for 2017-2019 Biennium</b>	<b>\$229,453,060</b>

**FY17 General Revenue Surplus**

**\$0**



# Act 1 - Arkansas Highway Improvement Plan of 2016

	FY17	FY18	FY19	FY20	FY21
	(x \$1 M)				
<b>2016 Special Session</b>					
Provide Governor's Rainy Day Funds	40.0				

FY18 (Governor's Projection)	FY18 (Current Projection)	Difference
<b>\$76.1M</b>	<b>\$7.3 M</b>	<b>-\$68.8 M</b>

Potential in Future Years					
Allocate 25% of Future Surplus to Highways (Estimate Based on 10 Year Average)		48.0	48.0	48.0	48.0
<b>Totals 2016 Special Session and Potential in Future Years</b>	46.9	76.1	76.1	76.1	76.1

Guaranteed from Act 1 by August 1, 2017 to match Federal Funds for Federal Fiscal Year 2017



# Projected Shortfall in State Highway Matching Funds Federal Fiscal Year 2017 (October 1, 2016 – September 30, 2017)

## Updated Projection of State Matching Fund Shortfall Based on Current Data

Description	Amount	
Original Projected Shortfall	\$ 47.8 M	
Increase in Motor Fuels Taxes and Payments	\$ 6.3 M	
Decrease in Natural Gas Taxes	3.2 M	
Increase in State General Revenue	+ \$ 3.5 M	
Local Government Payments	+ \$ 14.0 M	
	Sub-Total	- \$ 27.2 M
Security Services (1/12 <sup>th</sup> of Total for SFY 2018)	+ \$ 1.7 M	
Redirection of Diesel Tax that went to General Revenue (1/12 <sup>th</sup> of Total for SFY 2018)	+ \$ 0.2 M	
Eliminate the State Central Services Deduction from the 1/2 Cent Sales Tax	+ \$ 5.4 M	
<b>Current Projected Shortfall (needed by early August 2017)</b>	<b>- \$ 19.9 M</b>	

**Act 1123 – To Create Rainy Day Fund and to  
Provide Additional Funds for State Agencies and Institutions  
\$20 Million to the Department for State Matching Funds  
Needed by Early August 2017**

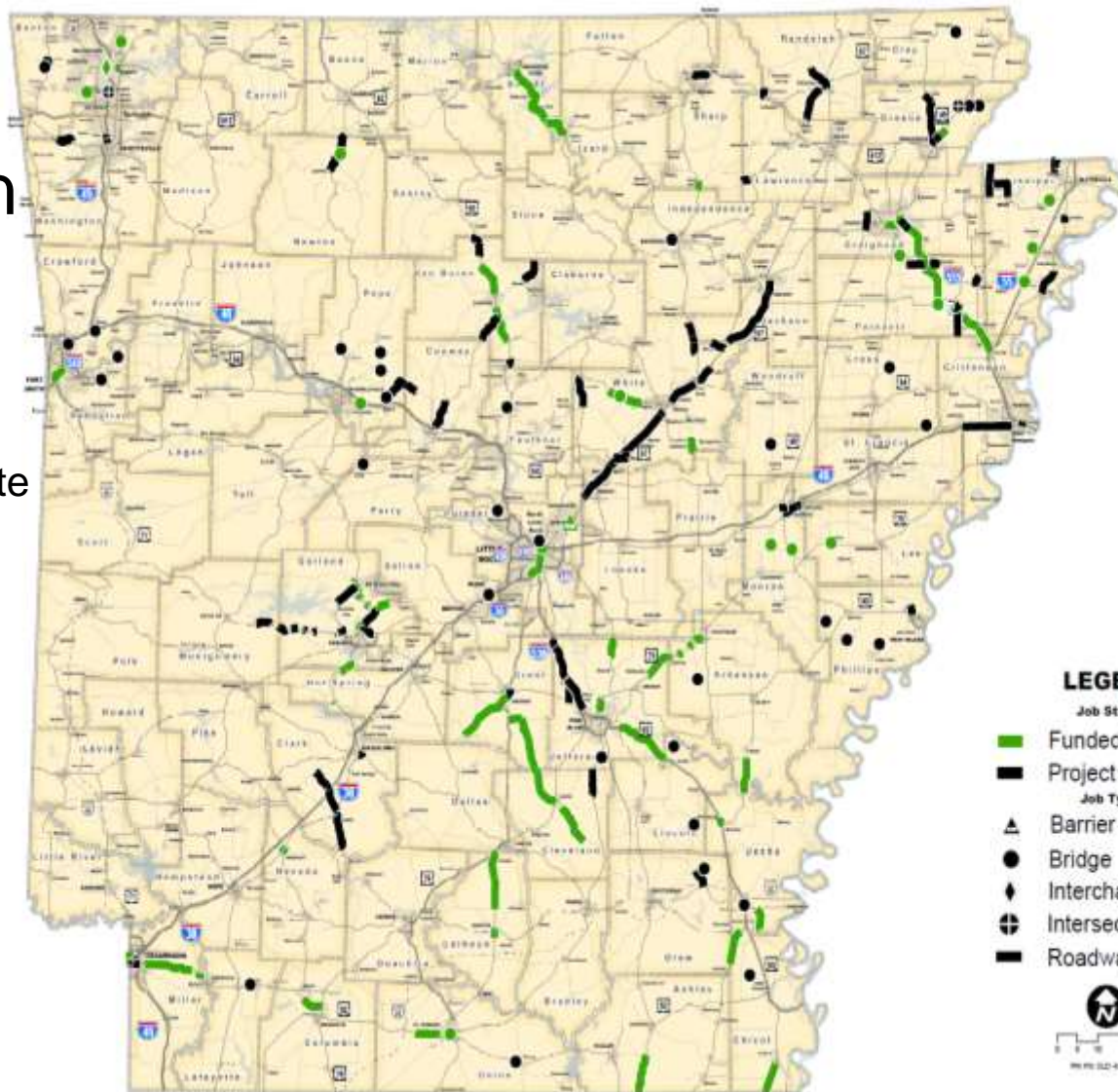


# Federal Fiscal Year 2018 Projects On Hold

Job Number	County	Route	Job Name	Cost Est.
110650	Crittenden	Hwy 38	Beatty St. - Southland Dr. (West Memphis) (S)	\$ 1,000,000
110655	Crittenden	Hwy 70	St. Francis Co. Line - Hwy 77 (S)	\$ 3,500,000
110644	Cross	Hwy 75	Drainage Ditch Str. & Apprs. (S)	\$ 800,000
110648	Cross	Hwy 364	Hwy 364 Str. & Apprs. (S)	\$ 700,000
110670	Monroe	Highways 49 & 70	Highways 49 & 70 (Sel. Secs.) (S)	\$ 3,700,000
110619	Philips	Hwy 39	Little Cypress Creek Str. & Apprs. (S)	\$ 1,000,000
110642	Philips	Hwy 35	Beaver Bayou Str. & Apprs. (S)	\$ 1,000,000
110657	Philips	Hwy 242	Hwy 49B - Hwy 242S (Helena-West Helena) (S)	\$ 400,000
110643	Philips	Hwy 316	Coffee Creek & Drainage Ditch Strs. & Apprs. (S)	\$ 1,500,000
110620	Woodruff	Hwy 17	Ditch at L.M. 10 96 Str. & Apprs. (S)	\$ 900,000
020582	Arkansas	Hwy 343	King Bayou Str. & Apprs. (S)	\$ 1,800,000
020586	Choctaw	Hwy 144	Man Ditch Str. & Apprs. (S)	\$ 1,000,000
020580	Desha	Hwy 278	UPRR Str. & Apprs. (S)	\$ 1,500,000
020587	Drew	Hwy 136	Abies Creek Str. & Apprs. (S)	\$ 2,000,000
020621	Drew	Hwy 293	Hwy 138 - Hwy 278 (S)	\$ 800,000
020664	Grant	Highways 167B & 270	Highways 167B & 270 (Shendan) (Sel. Secs.) (S)	\$ 800,000
020584	Jefferson	Hwy 54	Sandy Bayou Str. & Apprs. (S)	\$ 800,000
020659	Jefferson	Hwy 104	Hwy 270 - Hwy 365 (S)	\$ 1,100,000
020680	Jefferson	Hwy 365	Grant Co. Line - Pine Bluff (Sel. Secs.) (S)	\$ 8,000,000
020581	Lincoln	Hwy 11	Canal at L.M. 20 96 Str. & Apprs. (S)	\$ 800,000
020614	Lincoln	Hwy 54	Mills Bayou Str. & Apprs. (S)	\$ 700,000
030498	Lafayette	Hwy 82	Boudreaux Creek Str. & Apprs. (S)	\$ 2,000,000
030482	Miller	Hwy 67	Texas State Line - I-49 (Texarkana) (S)	\$ 3,800,000
040721	Crawford	Hwy 64	Hwy 64 Strs. & Apprs. (S)	\$ 2,100,000
040625	Sebastian	Hwy 98	Hwy 22 - Hwy 292 Strs. & Apprs. (S)	\$ 2,300,000
040725	Washington	Hwy 16	Benton Co. Line - East (S)	\$ 1,200,000
040720	Washington	Hwy 112	Poplar St. - Van Arche Dr. (Sel. Secs.) (Fayetteville) (S)	\$ 6,400,000
050343	Independence	Hwy 106	Dry Run Creek Str. & Apprs. (S)	\$ 700,000
050357	Sharp	Hwy 175	Hwy 62 - Fulton Co. Line (S)	\$ 2,000,000
050365	White	Hwy 5	Hwy 31 - Hwy 36 (S)	\$ 2,200,000
050358	White	Highways 64 & 67B	Highways 64 & 67B (Sel. Secs.) (Beble) (S)	\$ 1,400,000
050368	White	Hwy 87	Hwy 67 - Jackson Co. Line (S)	\$ 800,000
050382	White	Hwy 367	Hwy 35 - Bald Knob (S)	\$ 3,000,000
050355	White & Jackson	Hwy 167	Viavet Ridge - North of Hwy 87 (S)	\$ 4,400,000
061547	Garland	Hwy 7	Hwy 75 - Hwy 5 (S)	\$ 9,700,000
061519	Garland	Hwy 70B	Spring St. - Persimmon St. (Hot Springs) (S)	\$ 1,600,000
061523	Garland	Hwy 192	Hwy 227 - Hwy 7 (S)	\$ 1,000,000
061514	Garland	Hwy 227	Hwy 270 - North (S)	\$ 800,000
061530	Garland	Hwy 270	Montgomery Co. Line - Royal (Sel. Secs.) (S)	\$ 3,800,000
061506	Pulaski	Hwy 176	Shilcocks Bayou Str. & Apprs. (S)	\$ 700,000
061507	Pulaski	Hwy 395	Palm Creek Str. & Apprs. (S)	\$ 2,100,000
061500	Saline	Hwy 5	Creek at L.M. 4 85 Str. & Apprs. (S)	\$ 600,000

Job Number	County	Route	Job Name	Cost Est.
070255	Clark	Hwy 53	Hwy 51-I-30 (S)	\$ 4,500,000
070271	Clark	Hwy 53	Center Point-Hwy 67 (S)	\$ 2,500,000
070442	Clark	New Location	Hwy 67 - Hwy 51 (Arkadelphia Bypass) P.E.	\$ 5,000,000
070452	Cleveland	Hwy 63	Jefferson Co. Line - Friendship (S)	\$ 1,000,000
070473	Union	Hwy 82	Laple Creek Str. & Apprs. (S)	\$ 800,000
080464	Conway	Hwy 9	I-40 - Scroggins (Safety Impvs.) (S)	\$ 4,500,000
080957	Conway & Pope	Hwy 247	Hwy 105 - Hwy 213 (S)	\$ 2,600,000
080505	Faulkner	Hwy 225	Greentrier Creek Str. & Apprs. (S)	\$ 700,000
080651	Montgomery	Hwy 270	Twin Creek Rd. - Garland Co. Line (S)	\$ 1,000,000
080507	Ferry	Hwy 155	Ditch at L.M. 4 30 Str. & Apprs. (S)	\$ 700,000
080506	Pope	Hwy 7	Crooked Branch Str. & Apprs. (S)	\$ 1,500,000
080529	Pope	Hwy 105	Hector, Isabel, & Alewife Creeks Strs. & Apprs. (S)	\$ 2,200,000
080558	Van Buren	Hwy 9	Conway Co. Line - Hwy 65 (S)	\$ 1,800,000
080552	Van Buren	Hwy 9	Sharley - Stone Co. Line (S)	\$ 1,000,000
080531	Van Buren	Hwy 65	Hwy 65 (Van Buren Co.) (Sel. Secs.) (S)	\$ 2,400,000
090434	Benton	Hwy 59	Wolf Creek and Spring Branch Strs. & Apprs. (S)	\$ 1,800,000
090433	Benton	Hwy 264	Hwy 264/Belview St./Spring Creek Rd. Inters. Impvs. (S)	\$ 1,600,000
090487	Newton	Hwy 7	Jasper - Boone Co. Line (Sel. Secs.) (S)	\$ 1,100,000
100842	Clay	Hwy 141	Little Cache River Ditch Str. & Apprs. (S)	\$ 1,700,000
100884	Craighead	Hwy 63B	Hwy 18 - I-555 (Jonesboro) (S)	\$ 1,100,000
100906	Craighead	Hwy 34B	Hwy 226S - Hwy 91 (S)	\$ 1,100,000
100913	Craighead	Hwy 463	I-555 - South (S)	\$ 900,000
100870	Greene	Hwy 34	Hwy 34 Strs. & Apprs. (S)	\$ 4,800,000
100878	Greene	Hwy 46	Hwy 49-Hwy 34 Inters. Impvs. (Marmaduke) (S)	\$ 1,000,000
100917	Greene	Hwy 49	Hwy 49B North & South (Paragould) (S)	\$ 400,000
100904	Greene	Hwy 135	Hwy 49B - Hooker (S)	\$ 3,000,000
100902	Lawrence	Hwy 90	Randolph Co. Line - South of Hwy 63 (S)	\$ 300,000
100911	Lawrence	Hwy 230	Sharp Co. Line - Hwy 117 (Strawberry) (S)	\$ 300,000
100906	Mississippi	Hwy 61	Wilson - Hwy 198 (S)	\$ 1,100,000
100926	Mississippi	Hwy 61	Toluca - Hwy 148 (S)	\$ 400,000
100892	Mississippi	Hwy 77	Missouri State Line - Hwy 198 (S)	\$ 5,700,000
100912	Mississippi	Hwy 119	Hwy 18 - Hwy 77 (Leachville) (S)	\$ 600,000
100887	Mississippi	Highways 150 & 181	Highways 150 & 181 (Gosnell) (Sel. Secs.) (S)	\$ 1,000,000
100931	Poinsett	Hwy 89	I-555 - West (S)	\$ 600,000
100910	Poinsett	Hwy 89	Hwy 89S East & West (Trumann) (S)	\$ 500,000
100947	Poinsett	Hwy 140	Left Hand Chule of Little River - East (S)	\$ 500,000
100885	Poinsett	Hwy 149	Crittenden Co. Line - I-555 (S)	\$ 2,700,000
100932	Poinsett	Hwy 308B	Hwy 140 - Hwy 308 (Marked Tree) (S)	\$ 500,000
100927	Randolph	Hwy 90	Hwy 67 - West (Pocahontas) (S)	\$ 1,000,000
100905	Randolph	Hwy 166	Hwy 361 - Hwy 62 (S)	\$ 1,300,000
012269	Jackson, White & Lonoke	Hwy 67	Cabot - Newport (Hwy 67) (Pahub) (Sel. Secs.) P.E.	\$ 64,200,000
<b>GRAND TOTAL</b>				<b>\$ 216,800,000</b>

- 83 Projects
- \$250 Million
  - ✓ \$200 Million Federal Funds
  - ✓ \$50 Million State Funds



**LEGEND**

**Job Status**

- Green line: Funded Project
- Black line: Project on Hold

**Job Type**

- Triangle: Barrier Wall
- Circle: Bridge
- Diamond: Interchange
- Square with cross: Intersection
- Thick black line: Roadway

Scale: 0 5 10 Miles  
 N  
 000 000 000000

**Projects On Hold  
 Federal Fiscal Year 2018**



# Federal Highway & Transit



# Funding Issues

# America First

A Budget Blueprint to Make  
America Great Again



## President's 2018 Budget Blueprint for Transportation:

- \$2.4 Billion Cut in Discretionary Programs
- Limits funding to the Federal Transit Administration
- Eliminates funding for the TIGER Discretionary Grant Program





# President Trump's Infrastructure Plan

- **\$1 Trillion Over 10 Years**
- **Details of Plan Expedited**
- **Call for Projects**
  - ✓ “If you have a job that you can’t start within 90 days, we’re not going to give you the money for it” President Trump.
- **Streamline Regulations**
- **Pay Fors:**
  - **Tax Reform**
  - **Leverage Private Sector Investment**

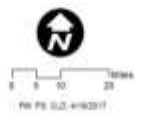


# America First Infrastructure Plan

## Arkansas' Proposed Jobs



**Red Line** New Location or Major Widening Projects  
**Blue Line** Various Pavement Preservation Projects





# Environmental Streamlining

## **Speeding Up Project Delivery Reducing Regulatory Red Tape**

- Federal Highway Administration - Section 4f – National Register of Historic Places
- Federal Agency Land Acquisition/Easements
- United States Army Corps of Engineers Mitigation
- Arkansas Department of Environmental Quality Delays
- Requirements for Seasonal Tree Clearing for Listed Bat Species
- Migratory Bird Treaty Act Requirements



# Federal Funding

- **Budget Agreement Reached**
- **Provides Federal Funding until September 30<sup>th</sup>**
- **Increased Funding**
- **Possible 2018 Shutdown**



# Challenges

- ✓ 12<sup>th</sup> largest system in the country
- ✓ 42<sup>nd</sup> in highway revenue per mile.
- ✓ \$23 billion in needs and capital improvements
- ✓ \$4 billion in available revenue
  - Flat Revenues
  - Loss of Purchasing Power

# News from



# Other States



# Louisiana May Lose Federal Dollars

- Unable to Match Federal Funds
- Up to \$150 Million the First Year
- Up to \$300 Million the Second Year
- Task Force Recommendations
- Gasoline Tax “Most Reliable” Source



# Current & Future



# Local Projects





# State Highway 82

**Completed**

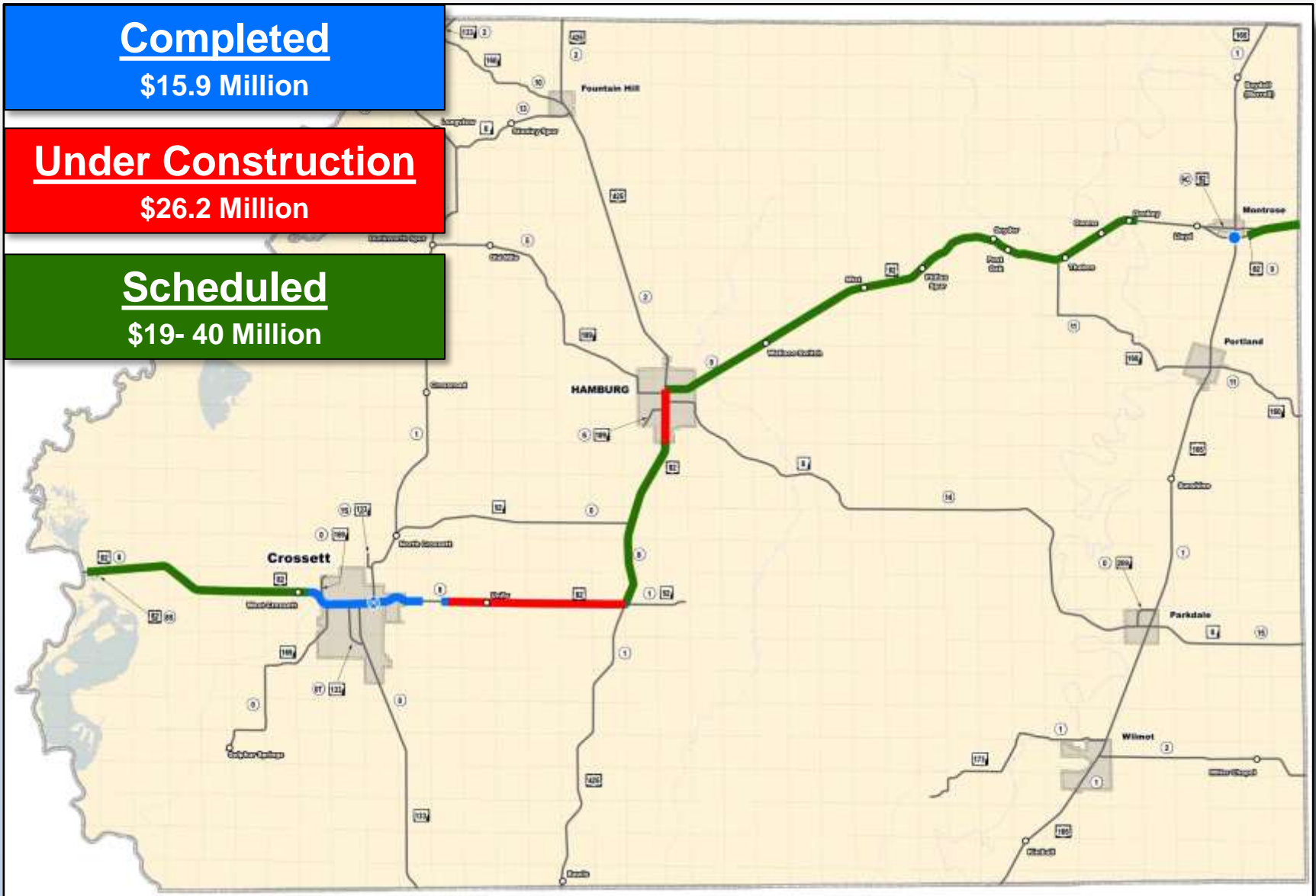
**\$15.9 Million**

**Under Construction**

**\$26.2 Million**

**Scheduled**

**\$19- 40 Million**





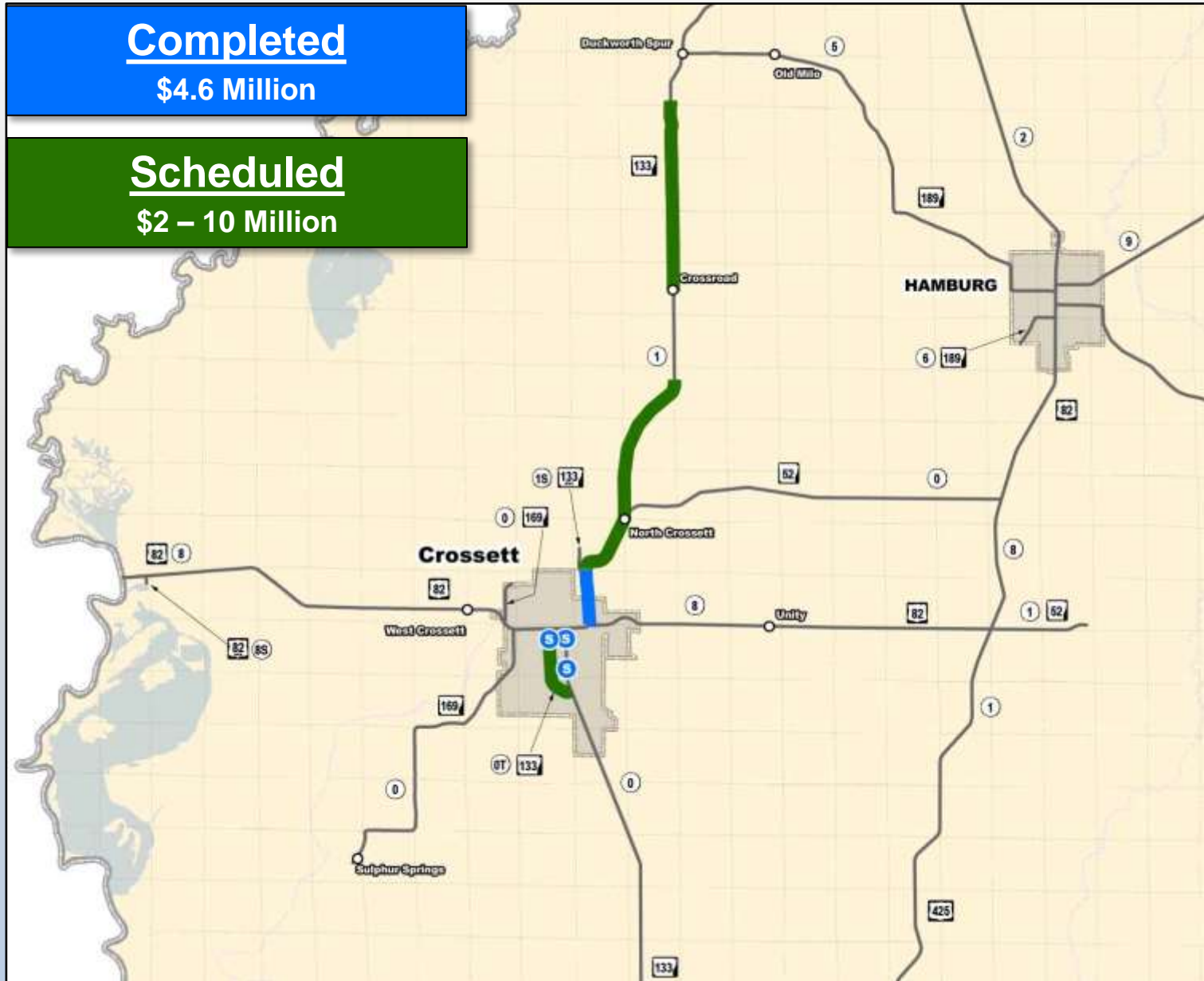
# State Highway 133

Completed

\$4.6 Million

Scheduled

\$2 – 10 Million





# State Highway 425

**Completed**

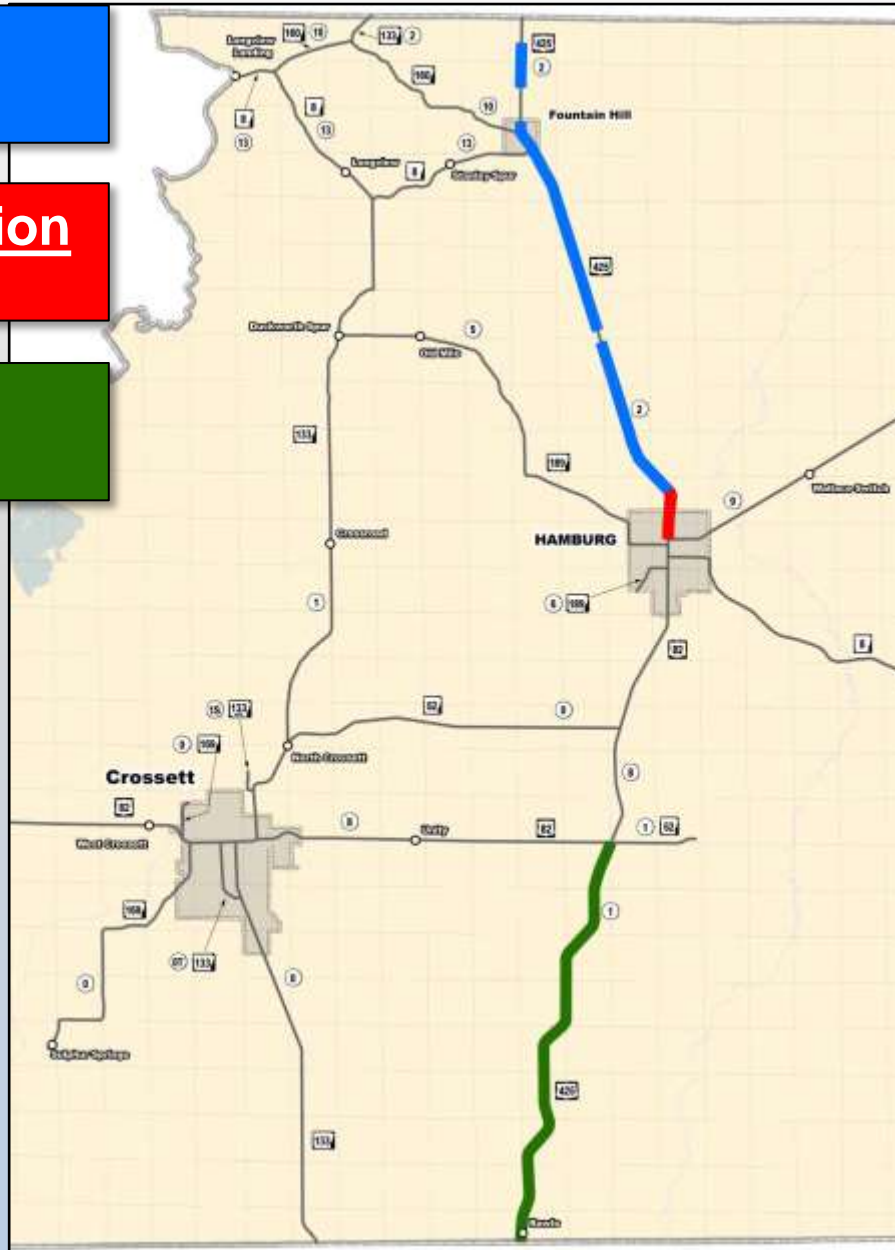
**\$4.4 Million**

**Under Construction**

**\$1.5 Million**

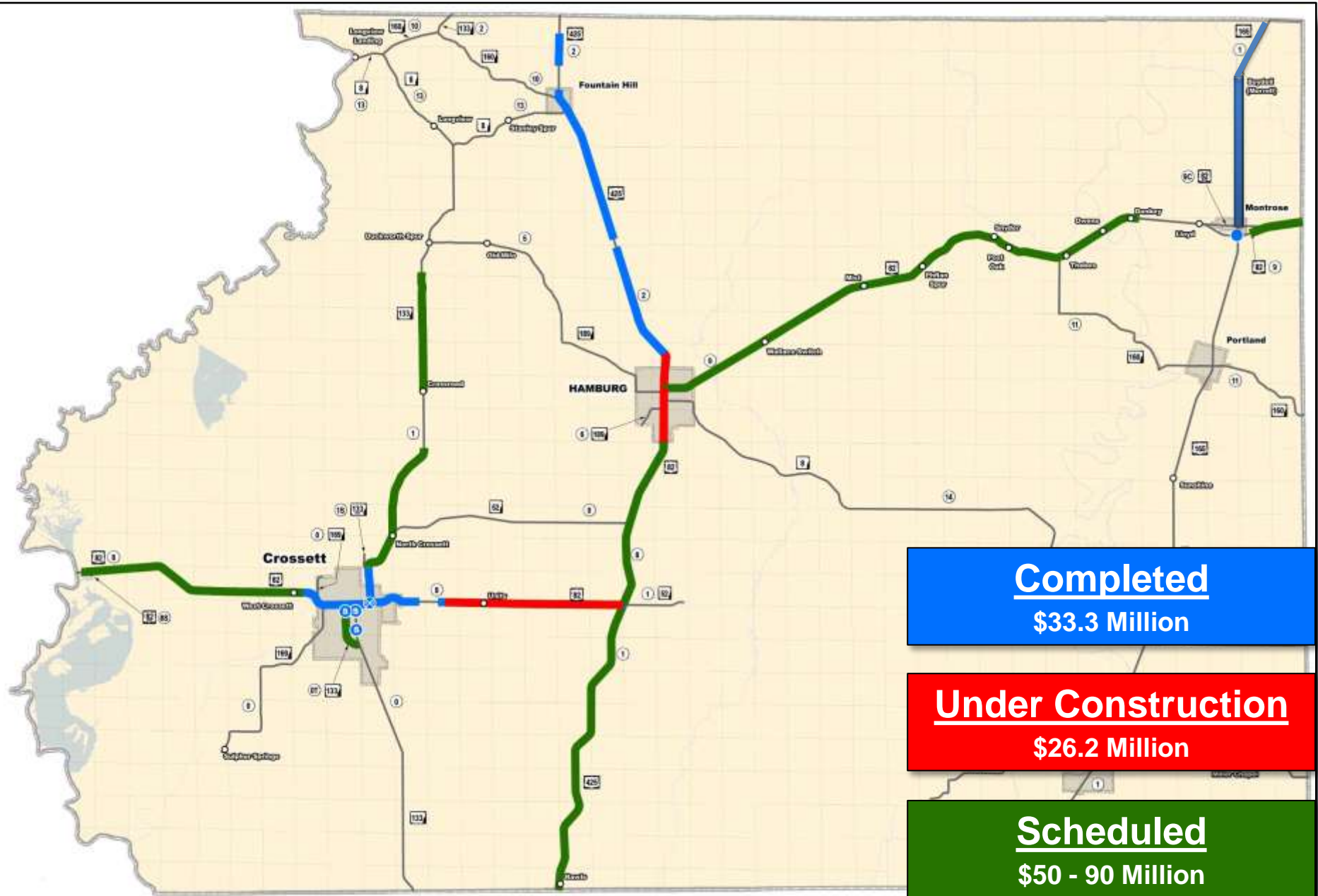
**Scheduled**

**\$30 – 40 Million**





# Ashley County



**Completed**  
\$33.3 Million

**Under Construction**  
\$26.2 Million

**Scheduled**  
\$50 - 90 Million

# Where Do We Go



# From Here?



# 2017 Legislative Session

"As to the long-term solutions, it emphasizes that it is difficult to get a referral of this General Assembly out to the voters, and that I hope the leadership of our state and the business community and others **will look at an initiated act that might go on the ballot for a highway program,"** he said.

"Otherwise, we'll continue to debate the long-term solution in future sessions."

Governor Asa Hutchinson

# Road User Related Tax Revenue

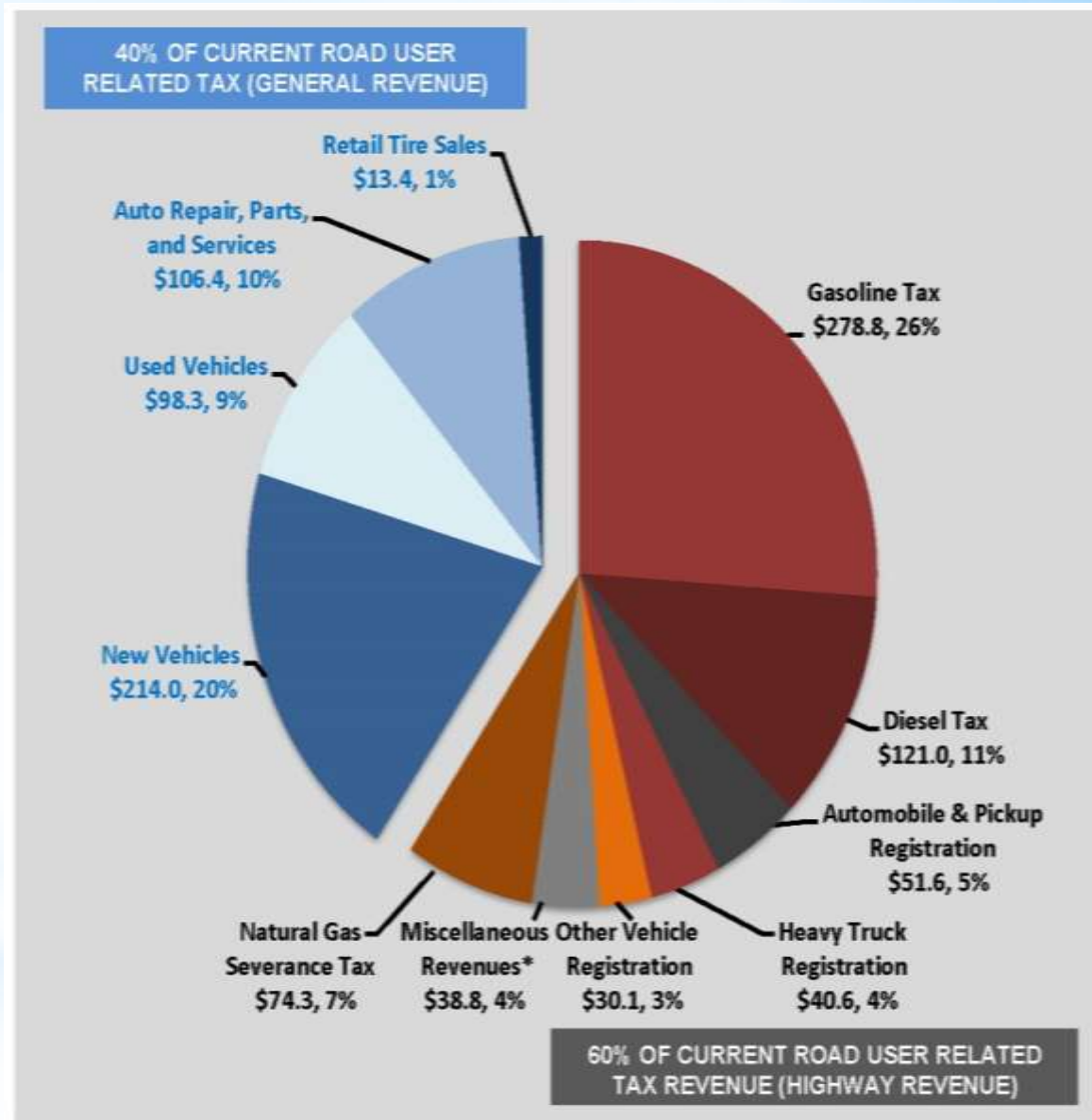
SFY 2015

Total Road User Revenue  
**\$1,067.3 Million**

Distribution:

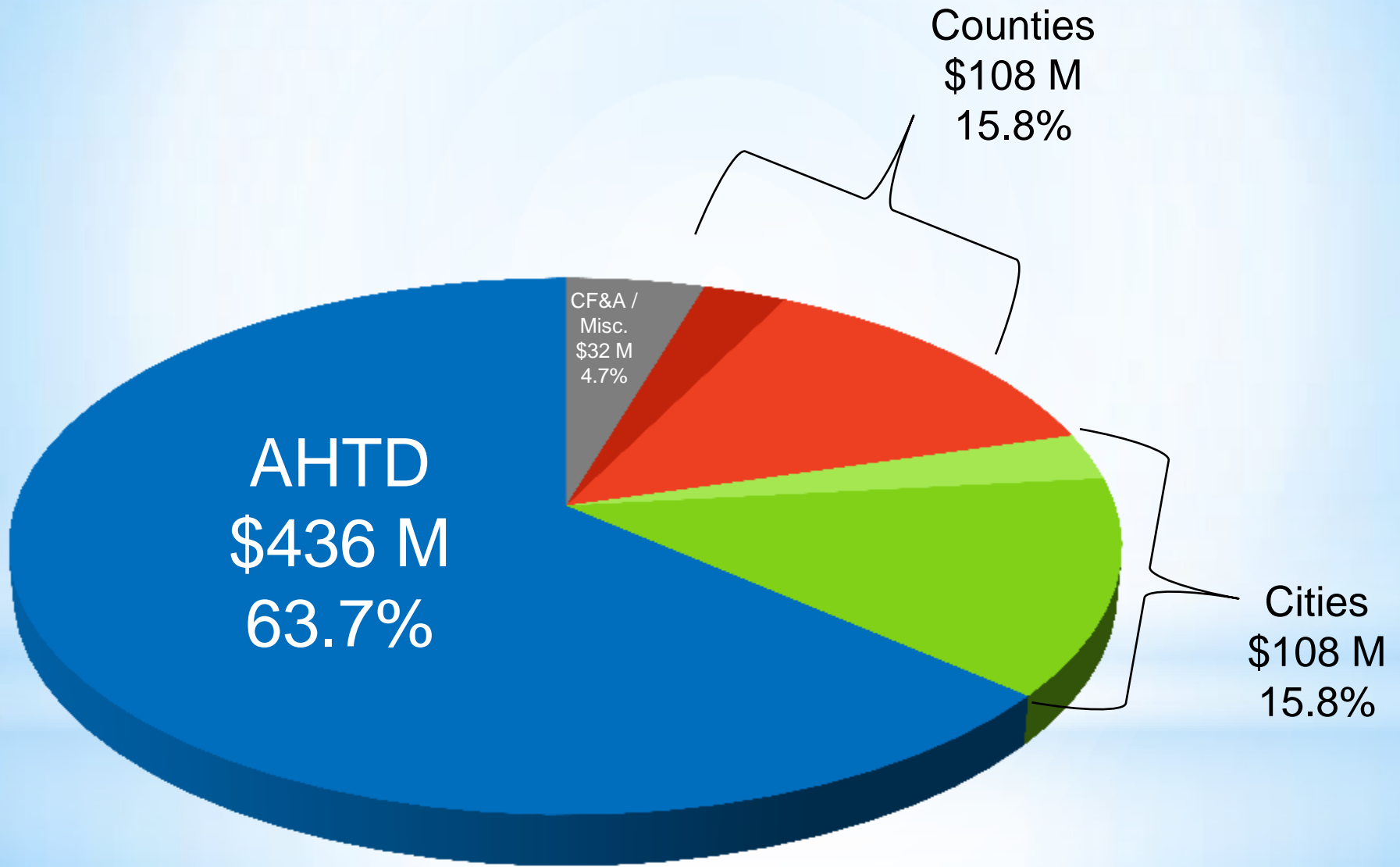
General Revenue  
**\$432.2 Million (40%)**

Gross Highway Revenue  
**\$635.1 Million (60%)**





# Highway Revenue Distribution





**FISCAL YEAR 2015 -- STATE REVENUE SOURCES**

ESTIMATES FOR PLANNING PURPOSES ONLY

(In millions of dollars based on SFY 2013)

	TOTAL STATE REVENUE	NET REVENUE AMOUNT <sup>1</sup>	YEARLY AMOUNT TO AHTD (79%)	YEARLY AMOUNT TO CITIES <sup>2</sup> (15%)	YEARLY AMOUNT TO COUNTIES <sup>3</sup> (6%)
<b>CURRENT SOURCES TO AHTD, CITIES, AND COUNTIES</b>					
<b>A. Motor Fuels Revenue<sup>4</sup></b>	<b>399.91 M</b>	<b>387.11 M</b>	<b>279.98 M</b>	<b>58.97 M</b>	<b>49.87 M</b>
Gasoline (21.5¢ per gallon)	279.44 M	269.32 M	189.94 M	40.49 M	34.49 M
Diesel (22.5¢ per gallon)	120.97 M	117.10 M	81.97 M	17.58 M	14.56 M
LPG (18.5¢ per gallon) / CNG (5.0¢ per gallon)	0.96 M	0.05 M	0.04 M	0.01 M	0.01 M
<b>B. Motor Vehicle Registration Fees</b>	<b>122.26 M</b>	<b>119.22 M</b>	<b>82.76 M</b>	<b>17.73 M</b>	<b>17.73 M</b>
Automobiles & Pickups	51.56 M	49.30 M	34.93 M	7.48 M	7.48 M
Heavy Trucks (Includes In-state and Out-of-State Vehicles)	40.83 M	39.29 M	27.93 M	5.89 M	5.89 M
	30.87 M	29.63 M	20.35 M	4.36 M	4.36 M
<b>C. Miscellaneous Revenues<sup>5</sup></b>	<b>36.8 M</b>	<b>37.88 M</b>	<b>32.76 M</b>	<b>2.56 M</b>	<b>2.56 M</b>
<b>D. Natural Gas Severance Tax<sup>6</sup></b>	<b>74.25 M</b>	<b>68.09 M</b>	<b>47.06 M</b>	<b>10.21 M</b>	<b>10.21 M</b>
<b>E. Total Current Revenues</b>	<b>636.22 M</b>	<b>611.31 M</b>	<b>434.15 M</b>	<b>86.58 M</b>	<b>86.58 M</b>
<b>OTHER REVENUE SOURCES</b>					
<b>A. Highway-user Sources</b>					
Additional 1 cent Motor Fuel Tax					
1 cent motor fuel tax <sup>7</sup>	19.83 M	19.18 M	13.43 M	2.88 M	2.88 M
1 cent gasoline tax	13.43 M	13.38 M	9.38 M	2.01 M	2.01 M
1 cent diesel tax	6.90 M	5.80 M	4.08 M	0.87 M	0.87 M
Increase Registration Fees on:					
Autos and Pickups by \$10	26.23 M	27.30 M	19.11 M	4.09 M	4.09 M
In-State Trucks by \$150 (except pickups)	15.04 M	14.54 M	10.18 M	2.18 M	2.18 M
In and Out-of-State Heavy Trucks from \$1,350 to \$1,500 <sup>8</sup>	5.05 M	4.80 M	3.40 M	0.73 M	0.73 M
Remove Sales Tax Exemption on Motor Fuels					
Gasoline	245.48 M	237.38 M	169.15 M	35.80 M	29.80 M
Diesel	171.19 M	165.54 M	115.89 M	24.83 M	24.83 M
	74.27 M	71.81 M	50.27 M	10.77 M	10.77 M
Add 1% Excise Tax to Motor Fuels (wholesale price)					
Gasoline	54.05 M	52.75 M	36.92 M	7.91 M	7.91 M
Diesel	38.04 M	36.79 M	25.75 M	5.52 M	5.52 M
	16.50 M	15.96 M	11.17 M	2.39 M	2.39 M
Transfer 4.50% Sales Tax on: <sup>10</sup>					
New Vehicles	214.03 M	206.97 M	144.89 M	31.05 M	31.05 M
Used Vehicles	96.33 M	95.08 M	68.55 M	14.26 M	14.26 M
Auto Repair, Parts, and Services <sup>11</sup>	106.44 M	102.82 M	72.05 M	15.44 M	15.44 M
Retail Tire Sales <sup>12</sup>	13.41 M	12.97 M	9.08 M	1.95 M	1.95 M
Off Road Diesel Fuel	9.82 M	9.50 M	6.85 M	1.43 M	1.43 M
Add 1% Surcharge on:					
New Vehicles	47.56 M	45.99 M	32.19 M	6.90 M	6.90 M
Used Vehicles	21.85 M	21.13 M	14.79 M	3.17 M	3.17 M
Auto Repair, Parts, and Services <sup>11</sup>	23.85 M	22.87 M	16.01 M	3.43 M	3.43 M
Retail Tire Sales <sup>12</sup>	2.98 M	2.90 M	2.02 M	0.43 M	0.43 M
Off Road Diesel Fuel	2.18 M	2.11 M	1.49 M	0.32 M	0.32 M
Weight Distance Tax (1 cent per mile) <sup>13</sup>					
	31.04 M	30.01 M	21.01 M	4.50 M	4.50 M
One Dollar Battery Fee					
	0.73 M	0.71 M	0.49 M	0.11 M	0.11 M
One Dollar Tire Fee					
	3.16 M	3.08 M	2.16 M	0.46 M	0.46 M
<b>B. Non Highway-user Sources</b>					
Increase General Sales and Use Tax - 1%					
	486.40 M	472.28 M	330.80 M	70.84 M	70.84 M
Increase Income Tax - 1%					
Individual Income Tax	31.14 M	30.11 M	21.08 M	4.52 M	4.52 M
Corporate Income Tax	26.64 M	25.78 M	18.03 M	3.89 M	3.89 M
	4.30 M	4.35 M	3.04 M	0.65 M	0.65 M

# REVENUE MENU



# Example of a Possible Initiated Act

## - Road User Revenue Transfer

- Long Term Solution

- Not a Tax Increase

- Transfer of Revenue on “Road User”

- 5 Year Phase-In

- Upon Expiration of the 0.5 Percent Sales Tax -  
Renew for 0.25 Percent



# Road User Related Tax Revenue

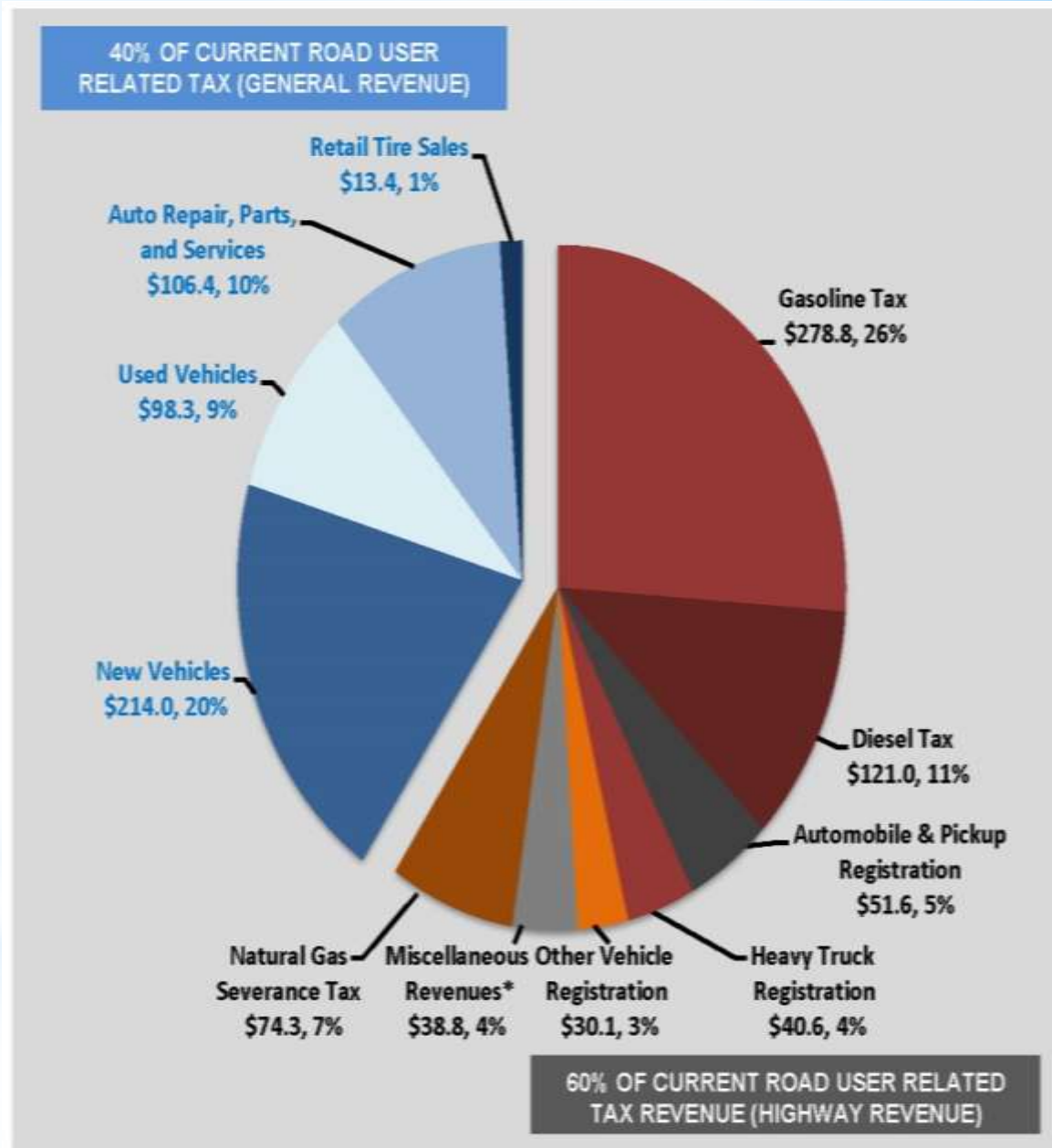
## SFY 2015

Total Road User Revenue  
**\$1,067.3 Million**

Distribution:

General Revenue  
**\$432.2 Million (40%)**

Gross Highway Revenue  
**\$635.1 Million (60%)**





- [ArkansasHighways.com](http://ArkansasHighways.com)
- [ConnectingArkansasProgram.com](http://ConnectingArkansasProgram.com)
- [Vimeo.com/AHTD](http://Vimeo.com/AHTD)
- [IDriveArkansas.com](http://IDriveArkansas.com)
- [Twitter.com @AHTD](https://twitter.com/AHTD)



@AHTD



# Questions?

